

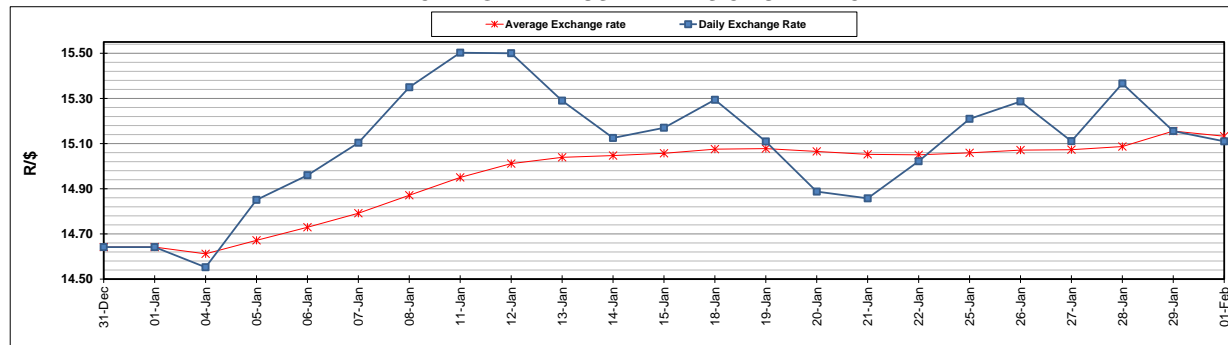
	PETROL 95 ULP	PETROL 93 ULP & LRP	DIESEL 0.05%	DIESEL 0.005%	ILL. PAR.
GAUTENG PUMP PRICE (SA c/l) AS FROM 03/02/2021	1,567.000	1,550.000	-	-	-
WHOLESALE PRICE (SA c/l) AS FROM 03/02/2021	-	-	1,358.420	1,360.820	798.688
SINGLE NATIONAL MAXIMUM RETAIL PRICE	-	-	-	-	1,008.000
BASIC FUEL PRICE - 01/02/2021 (SA c/l)	609.087	601.640	601.865	605.733	586.152
PRESS RELEASE CONTRIBUTION TO BFP 29/01/2021 - 01/02/2021 (SA c/l)	519.170	512.170	541.630	543.030	527.128
UNIT OVER/(UNDER) RECOVERY - 01/02/2021 (SA c/l)	(89.917)	(89.470)	(60.235)	(62.703)	(59.024)
AVERAGE BASIC FUEL PRICE 29/01/2020 - 01/02/2021	608.142	600.623	598.125	602.007	582.337
AVERAGE UNIT OVER/(UNDER) RECOVERY 29/01/2021 - 01/02/2021	(88.972)	(88.453)	(56.495)	(58.977)	(55.209)

ANALYSIS MOVEMENT OF AVERAGE OVER/(UNDER) RECOVERY

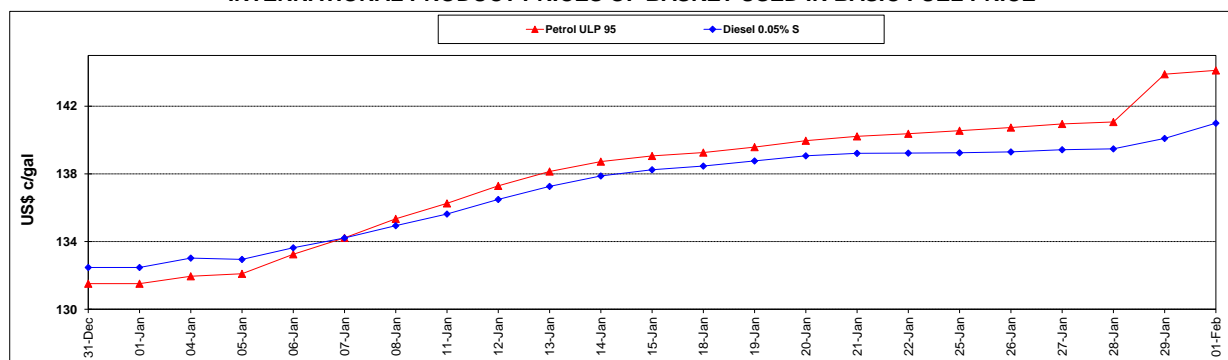
	PETROL 95	PETROL 93	DIESEL 0.05%	DIESEL 0.005%	ILL. PAR.
- MOVEMENT IN INTERNATIONAL PRODUCT PRICES	(87.139)	(86.643)	(54.693)	(57.163)	(53.454)
- MOVEMENT IN EXCHANGE RATE	(1.833)	(1.810)	(1.802)	(1.814)	(1.755)
AVERAGE UNIT OVER/(UNDER) RECOVERY 29/01/2021 - 01/02/2021	(88.972)	(88.453)	(56.495)	(58.977)	(55.209)

R/\$ EXCHANGE RATE - (R/\$15.1100 - 01/02/2021)

EXCHANGE RATE USED IN BASIC FUEL PRICE



INTERNATIONAL PRODUCT PRICES OF BASKET USED IN BASIC FUEL PRICE



BASIC FUEL PRICE IN SA CENTS PER LITRE

